

SUMMER TERM 1: YEAR SIX

ENGLISH –Mama Miti: Wangari Mathai

Revision before SATs

1. Reading Comprehension
2. Grammar and Spelling

Writing

1. Using a range of sentence structures, grammatical elements and punctuation
2. Writing in a range of genre.



MATHS

Revision before SATs

1. Arithmetic
2. Problem solving and reasoning
3. Angles and Data handling



SCIENCE

Reproduction in plants and some animals

1. Asexual reproduction
2. Sexual reproduction in non-flowering plants
3. Sexual reproduction in flowering plants
4. Reproduction in animals
5. Growth stages



GEOGRAPHY

Africa

1. The Continent of Africa
2. Past civilisations and empires – Mansa Musa
3. The Sahara Desert and Desertification
4. Food Security
5. Kenya



RE

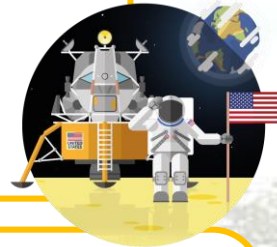
How far does faith enable resilience?

1. People of God – those that went before
2. Different peoples views about an afterlife
3. Different faith traditions and beliefs

HISTORY

The Cold War

1. The Cold War
2. The Arms race
3. The Cuban Missile Crisis
4. The Space Race
5. Proxy Wars



PE

Cricket

1. Developing bowling, catching, fielding and hitting skills
2. Playing mini-games

MUSIC

Reggae

1. Origins and features of reggae
2. Introduce the drum groove
3. Develop an understanding of the features of reggae
4. Performance



FOREST SCHOOL

1. Knives and Tools



ART

Impressionism and Post-Impressionism

1. Introduction to Impressionism – Monet
2. Use of Scientific knowledge and painting *en plein air*
3. Painting of Modern Life – Degas and Renoir
4. Post-Impressionism – Cezanne
5. Post-Impressionism – Van Gogh & Gauguin
6. Japanese influenced on the Impressionists.

COMPUTING

Networks

1. The World Wide Web and the internet
2. Our school network and accessing the internet
3. Research

PSHCE

Working World

Looking at in-App purchasing
British Values

DT

Cook - Mezze

1. Recipes
2. Make
3. Taste and Evaluate

MFL : FRENCH

All in a day

1. Time vocabulary
2. Time phrases – to read and write
3. Using time in context

