

KEY VOCABULARY	
peoples	
ceremony	
Bamana Peoples	
headdress	
Edo Peoples	
Benin City	
plaque	
relief	
cast	
brass	
ivory	

- members of a particular nation or community
- a **social or religious occasion** often celebrating a particular event
- a group of **peoples living mainly in Mali, Western Africa**
- a **covering for the head**, especially worn in ceremonies
- a group of **peoples living mainly in southern Nigeria**
- a **city in southern Nigeria**, West Africa: Benin City flourished from the 14th-17th centuries as the centre of the Benin Kingdom
- a **flat, decorated slab**, often square or rectangle that is fixed, to a wall or other surface and remembers an event or a person
- where **sculptures stick out from a flat surface**, rather than being made all the way around
- the process of making an object by **shaping liquid metal in a mould**
- a metal made by mixing two other metals, **copper and zinc**
- a hard, white substance, **made from the tusks of elephants**, which can be carved

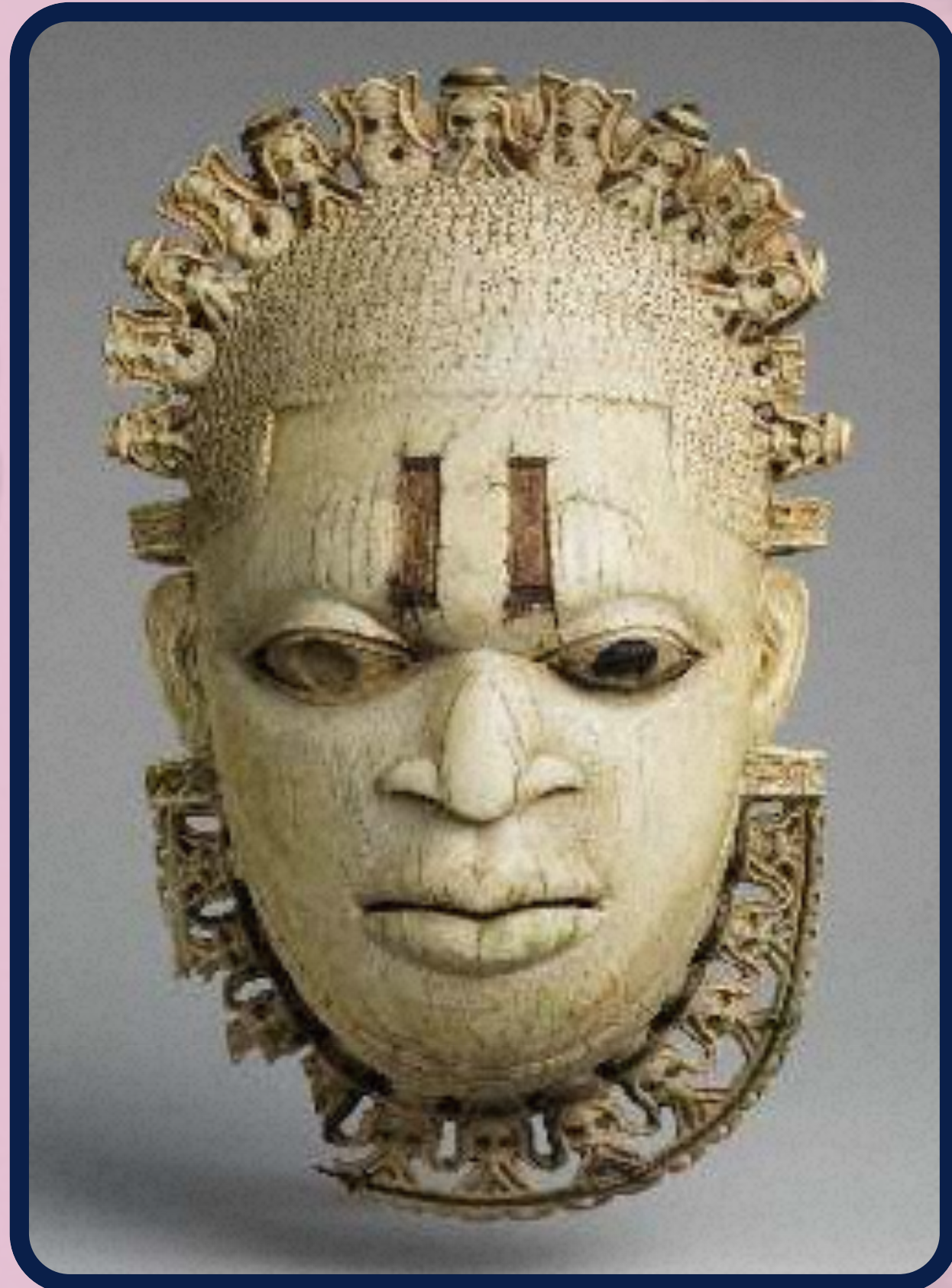
Benin plaque showing equestrian Oba and attendants, Nigeria (Edo Peoples)

1550-1680



Benin ivory mask of Queen Mother, Nigeria (Edo peoples)

16th century



antelope headdress, Mali (Bamana Peoples)

19th century/early 20th century



- Senegal
- Gambia
- Guinea-Bissau
- Sierra Leone
- Liberia
- Cote D'Ivoire
- Ghana
- Togo
- Benin
- Mali
- Niger
- Nigeria
- Cape Verde