



Newsletter

Autumn term

01234 740100

office@cottonendforestschool.co.uk

Inspire, Enjoy, Achieve



16th September 2022



Dear Parents and Carers

Welcome to the first newsletter for this term, we hope you find that it gives an insight into school life and the information is useful for you.

We have been so impressed with all of the new Reception children coming into school this week, they have settled really quickly into confidently leaving their parents at the gate and enjoying their learning in class with their new friends. Well done!!

Across the school the children have got off to flying starts with their new topics for this term: Reception: Super Me, Year 1: Our Forest School, Year 2: Map it Out, Year 3: Rainforests, Year 4: Coast to Coast, Year 5: Around the World and Year 6: Our Amazing Earth.

Our learning takes place both inside and out of the classroom and Year 1 children have had an amazing Forest School session today which included painting stones for our garden, exploring the school grounds and toasting brioche around our firepit! Year 2 have confidently shared their learning about the book they have been reading in English, the different parts of the world linked to that and their topic in the whole school assembly today. Year 3 classes of Nightingales and Kingfishers really impressed me with their performance of poetry at the amphitheatre this week-Well done everyone!!

School Attendance: Can we please remind you that we follow guidance from the DFE and Bedford Borough and monitor school attendance and punctuality closely. We are unable to authorise any holidays in term time, except in very exceptional circumstances and some unauthorised absences may incur fines. We, like you as parents, want the very best outcomes for your children and consistent, punctual attendance will help to support this. We have made a great start to the year and our attendance this week is 97.1% but we are obviously aiming for higher!! Thank you for your support.

As you are aware, **Monday 19th September** is now a bank holiday and School will be closed for the State funeral of Her Majesty the Queen.

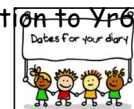
Karen Headland

PARKING-Please use the large car park to the side of the school, it is a very short, safe walk to any gate to drop off or collect your children. The front car park is only for staff and drivers with valid blue badges to use a disabled bay. Thank you for your consideration.



Diary Dates

- 19th Sept—Bank Holiday
- 28th Sept—MacMillan Coffee Morning
- 29th Sept—Preschool Photos
- 3rd Oct- Reception to Yr6 Photos
- 17th Oct—Flu Immunisations Reception to Yr6
- 24th Oct—Half Term
- 31st Oct—Teacher Training Day
- 1st Nov—Return to School



MacMillan Coffee

Morning

On Wednesday 28th September our PTFA will be hosting a coffee morning in recognition of the Charity MacMillan Cancer Support. We will be selling tea, coffee and cake for parents in the school hall between 9am and 10am. We will also be having a decorated cake competition with the theme "Forest School". Please bring all entries into school on the Wednesday morning. The cakes will be judged by age group and prizes awarded. All cakes will then be auctioned off at 10.15am.



In addition, we have invited representatives from the charity Shortstown Children's Centre to discuss and highlight all the facilities and social groups they can offer to families with pre school aged children.

Finally, on this occasion you will also have the opportunity to chat with our Family Support Worker, Mrs Chesters-Lewis for help and advice on any family related issues and also get the chance to browse and purchase a range of second hand clothing from our "Pre Loved Shop". All funds raised from this will go towards our PTFA.



We aim to provide our children with opportunities to become confident, happy children valuing and respecting diversity and who are proud of their achievements.

PTO

Newsletter



Autumn term

01234 740100

office@cottonendforestschool.co.uk

Inspire, Enjoy, Achieve

16th September 2022



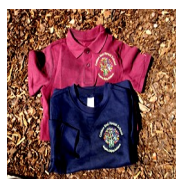
Bank Holiday

We are deeply saddened to hear of the death of Her Majesty Queen Elizabeth II. Our thoughts are with the Royal Family at this difficult time. As formally approved by King Charles III, Monday 19th September will be a National Bank Holiday to honour the state funeral of the late Queen Elizabeth II. Therefore the school will not be open on this day.



School uniform

As it is the start of a new academic year, many children will have brand new uniform. Please could we remind you to write your child's name clearly on the labels. Also could we please ask you to check the uniform you have at home just in case your child has accidentally picked up another child's item.



Thank you.

School Start Time

Please be reminded that school times have changed on Fridays. They will now run in line with the rest of the week and finish at 3.30pm. Please also bear in mind the school gates open at 8.45am and close at 9am. If your child arrives after this time, they will be recorded as late with effect from next week.



Attendance

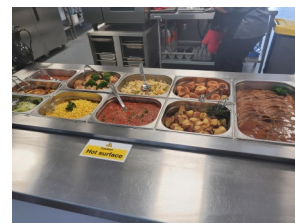
A big well done to Willows class this week with 100% attendance and Owls class last week with 100%.

The whole school attendance is 97.1% but we are aiming for 98%!



School Dinners

Please could we politely remind everyone to ensure that your school dinners have been pre-ordered via School Grid. You will be able to order in advance up until the next half term and your account will need



to be in credit. If your child is off school please ensure you have cancelled the meal or you will be charged.



Absences

If your child is going to be off school please ensure that you phone in to the office on **each day of their absence before 9.15am**. There is an option when you call in to leave a message on the answerphone, which is available 24 hours a day 7 days a week, if you choose this option please state your child's name, class and reason for their absence. Alternatively you are more than welcome to phone in and speak to the office directly. Can we please remind you that if your child is absent from school for 3 days or more you may be asked to provide medical evidence to support their absence this can be in the form of a doctors text message or appointment card, copy of prescription, consultant letter etc.

