



Newsletter

Autumn term

01234 740100

office@cottonendforestschool.co.uk

Inspire, Enjoy, Achieve



17th September 2021



Dear Parents and Carers

Welcome to our first newsletter for our new academic year.

We have been so pleased to welcome all of the children back to school for the start of the Autumn term; it is lovely to see the playground buzzing with activity and the children playing happily with their friends. Thank you for sending them all in wearing the correct uniform—they all look extremely smart.

Last week we focussed on well-being and resilience activities which successfully helped the children to adapt to their new routines, classes, classmates and teachers.

Reception children have joined us this week and I am really proud of how confident they have been coming into school, in the classrooms and at lunchtimes. When I have visited the classes they have been happily learning with their friends.

Now that the children have settled back quickly into the daily routines at school they are enjoying the start of their new geography based topics:

- Year 1—Our Forest School
- Year 2—Map it Out!
- Year 3—Rainforests
- Year 4—Coast to Coast
- Year 5—Around the World
- Year 6—Our Amazing Earth



Forest School sessions have started too and Wookpeckers class looked at music and musical instruments this week, and Scarlett, Isabelle and Amelia worked really well together in forming a three-piece band. They made musical instruments using the natural resources at Forest School and were keen to show their creations.

We are very pleased with our school meals provider-HCL, the new system for ordering lunches seems to be going very well; the children like using the technology to find their name and clicking to show their choice of lunch in the dinner hall. The lunches themselves look fabulous and have been enjoyed by both children and staff.

Many of our children take part in activities outside school and it is lovely that they share this with us—One of our Year 4 children has been to see me to tell me that she has been given a part in the Aladdin panto at Bedford Corn Exchange in November-how exciting!

Polite reminder—the car park at the front of the school is for staff and blue badge holders only. We have ample parking in the large car park to the side of the school, please use this and help us to keep your children safe.

Karen Headland

Diary Dates

- 20th September - Individual student photos
- 22nd October - Last day before half term
- 1st November - Teacher training day
- 2nd November - Children return to school
- 17th December - Last day of term



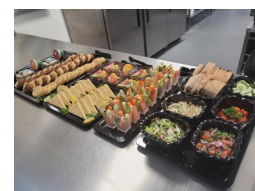
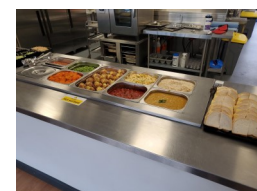
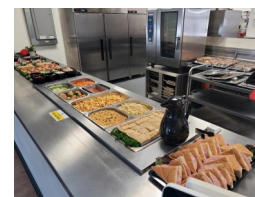
Food Donations

During the pandemic we endeavoured to assist some families with some food parcels donated from a local supermarket. If you find that you're still struggling in these unprecedented times please get in touch with Mrs Chesters-Lewis.



HCL

We are delighted to inform you that the response to our new catering contractor HCL has been hugely positive. We would like to offer a huge thank you to all parents / carers who have registered with the new system and assisted with making the transition as smooth as possible.



We aim to provide our children with opportunities to become confident, happy children valuing and respecting diversity and who are proud of their achievements.

Newsletter



Autumn term

01234 740100

office@cottonendforestschool.co.uk

Inspire, Enjoy, Achieve

17th September 2021

School Start Time

Please be reminded that the school gates open at 8.45am and close at 9am. If your child arrives after this time, they will be recorded as late with effect from next week.



Attendance

A big well done to Eagles class this week with 99.6% attendance.



The whole school attendance is 97.3% but we are aiming for 98%!

Catering Deliveries

You may have heard via public media that supermarkets and similar establishments are struggling to receive deliveries to meet their usual demand. This is also the case for our catering supplier hence over the next few weeks we may have to substitute from our existing menu. If this is the case, we will endeavor to inform you asap.

Important information

We have several children in school with nut allergies. Please can we remind you that we are nut free school. If your child brings any items into school that contain nuts in any form such as Nutella, cereal bars etc this will be returned unopened to you. Thank you for your support in keeping our children safe.



School uniform

We have had a couple of incidences whereby children have lost school jumpers this week. Please could we remind you to write your child's name clearly on the labels.

Also could we please ask you to check the uniform you have at home just in case your child has accidentally picked up another child's item. Thank you.



Library Books

You may recall, before the pandemic children from certain year groups were encouraged to visit our mobile library. This of course was paused over the last 18 months. It is not our intention to reinstate this service however if your child has any library books still at home, please could you return them to the school office as soon as possible.



Absences

If your child is going to be off school please ensure that you phone in to the office on **each day of their absence before 9.15am**. There is an option when you call in to leave a message on the answerphone, which is available 24 hours a day 7 days a week, if you choose this option please state your child's name, class and reason for their absence. Alternatively you are more than welcome to phone in and speak to the office directly. Can we please remind you that if your child is absent from school for 3 days or more you may be asked to provide medical evidence to support their absence this can be in the form of a doctors text message or appointment card, copy of prescription, consultant letter etc.

